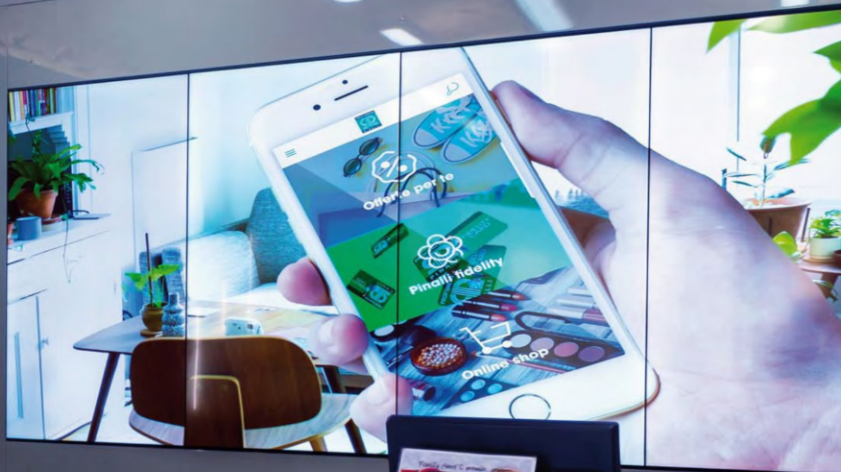


PHILIPS

Professional Display Solutions

2019



2019 Range **guide**

Signage solutions and Professional TV



Tailored tech solutions **for better business**

Reach a new standard
in digital communication.
Philips Professional Display Solutions
proudly present the 2019 range.

Android™

Infinite possibilities for better business

Engage, inform and create with ease. When you choose a Philips professional display powered by Android, you'll have access to millions of apps from the Google Play store.

You'll also experience more ways to connect your custom software for a truly unique experience.

Do more with Android

Give your clients more ways to enjoy their time in front of your screens.

Make a positive impression as a tech-forward company with tailored experiences.

Enjoy better connectivity with your existing systems without additional costs.

Open-source design allows you to create custom apps for any purpose.

Secure Google updates keep your Android apps optimised and protected.



T-Line

Interactive engagement

Captivate, inform, and inspire total engagement with the T-Line. True multi-touch interactivity allows for collaborative interaction, and QuadViewer enables up to four inputs being displayed simultaneously.

86"

75"

65"

55"

43"

24"

10"

Corporate

Inspire true collaboration with touch-screen functionality. Built-in Android provides access to apps and faster connectivity. QuadViewer allows for multiple sources to be connected and displayed simultaneously.





© 2019 Koninklijke Philips N.V. All rights reserved.

Specifications are subject to change without notice. Trademarks are the property of Koninklijke Philips N.V. (Royal Philips) or their respective owners.

philips.com/professionaldisplaysolutions